

e5w

east 5th and walnut, des moines, ia 50309

- plastic laminate countertops
- walnut cabinets with soft close hardware
- Portobello 12"x 24" porcelain tile
- Hans Grohe faucets & 3'x 6' bath tubs
- Stainless steel appliances
- Cork flooring
- 5'x10' private balcony
- Washer and dryer

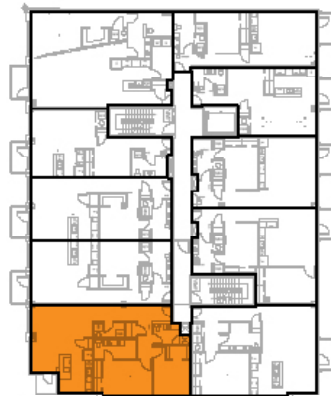


unit 305/405 | 1,248 sf



**COLDWELL
BANKER**
MID-AMERICA GROUP,
REALTORS®
Each Office Is Independently
Owned And Operated

SThoward
DEVELOPMENT
www.sthowarddevelopment.
com



key plan